



SEATON

LIFE INSPIRED

SHEFFIELD BEACH, KWAZULU-NATAL, SOUTH AFRICA



## RIDE LIFE'S ADVENTURES

What's better than living within the same estate as your horse and freely ambling along the bridle paths that lead directly to the beach? Imagine galloping along the shoreline at your own leisure. Specially designed and uniquely crafted for passionate equestrians, Seaton offers stabling with paddocks, lunge rings and a full-sized ebb and flow arena.

Set among a grove of trees and snuggled within gentle sloping valleys, Seaton presents a charming country lifestyle with a coastal twist. Boasting large stands to accommodate modern farm-style homes, these sites have been positioned to enjoy sweeping landscape views and exquisite paddocks. This is where country charm meets coastal living.



# THE HEART OF IT ALL

Welcome to Seaton Country Club. Situated in the heart of Seaton where valleys meet views, lies Seaton Country Club. A hubbub of activity and place of respite. The country club hugs the hillside, enveloping around the beautiful cricket oval, with a number of courts and activities alongside that – tennis, padel, 5-a-side soccer and basketball courts. The fully functioning gym lies next to a lap pool and squash court.

Leisure time is spent alongside the resort-themed pool with slides and splash parks. Restaurants and pool-side bars with outdoor decks cater to your entertainment needs. Seaton Country Club is yours – to connect, to compete or simply just to capture the day....





## LIFE'S BETTER ON **THE BAY**

Feel the calming energy of the sea while you sleep, wake up to the crashing waves, and marvel over the glistening sea views that will become the daily backdrop of your life's story. Explore vast country-style landscapes and spend endless hours at the beach.

Seaton introduces never seen before oceanside residences. Homes will be created through an exceptional ecosystem starting with an architectural ethos that promotes sustainable living. Take a quick amble to Seaton's ideally placed Beach Clubhouse, where you simply step out of the estate and straight onto beach sand. The direct access point opens over a kilometre of pristine exclusive beach frontage of the treasured Christmas Bay.

# EXPERIENCE LIFE

# UNFILTERED



Beach Clubhouse



Direct beach access



26km running/  
bicycle trails



Rehabilitated natural  
forests and parks



Gym



Leisure zones



Tennis courts



Padel courts



Squash courts



Basketball court



Nature trails



Family  
picnic sites



Sustainable  
designs



Bird hides



Reciprocal rights to  
Zululami



Country Club



Restaurant and  
poolside bar



Cricket oval



5-a-side  
soccer



Stabling facilities



Lunge rings



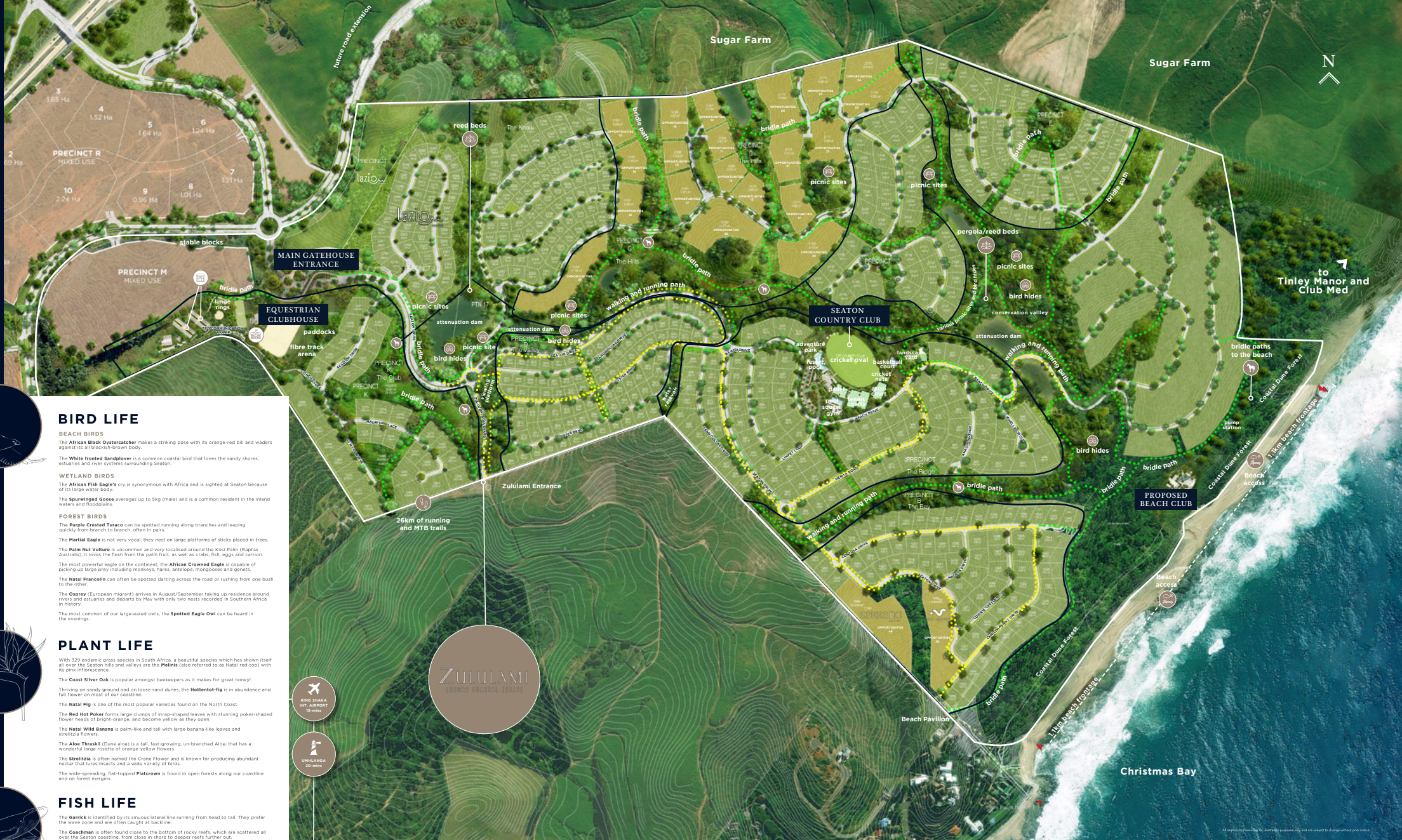
Show jumping  
arena



Bridle paths



Equestrian  
Clubhouse



### BIRD LIFE

**BEACH BIRDS**  
 The **African Black Oystercatcher** makes a striking pose with its orange-red bill and waders against its all black streamer body.  
 The **White fronted Sandplover** is a common coastal bird that loves the sandy shores, estuaries and river systems surrounding Seaton.

**WETLAND BIRDS**  
 The **African Fish Eagle's** cry is synonymous with Africa and is sighted at Seaton because of its large water body.  
 The **Spurred Geese** averages up to 8kg (male) and is a common resident in the inland waters and floodplains.

**FOREST BIRDS**  
 The **Purple Crested Turaco** can be spotted running along branches and leaping quickly from branch to branch, often in pairs.  
 The **Martial Eagle** is not very vocal, they nest on large platforms of sticks placed in trees.  
 The **Palm Nut Vulture** is uncommon and very localised around the Kosi Palm (Raphia Australis), it loves the flesh from the palm fruit, as well as crabs, fish, eggs and carrion.  
 The most powerful eagle on the continent, the **African Crowned Eagle** is capable of picking up large prey including monkeys, hares, antelope, moposses and giraffe.  
 The **Natal Francolin** can often be spotted darting across the road or rushing from one bush to the other.  
 The **Osprey** (European migrant) arrives in August/September taking up residence around rivers and estuaries and departs by May with only two nests recorded in Southern Africa in history.  
 The most common of our large-eared owls, the **Spotted Eagle Owl** can be heard in the evenings.



### PLANT LIFE

With 329 endemic grass species in South Africa, a beautiful species which has shown itself all over the Seaton hills and valleys are the **Melinis** (also referred to as Natal red-top) with its pink inflorescence.  
 The **Coast Silver Oak** is popular amongst beekeepers as it makes for great honey!  
 Thriving on sandy ground and on loose sand dunes, the **Mottentot-tig** is in abundance and tall flower on most of our coastline.  
 The **Natal Fig** is one of the most popular varieties found on the North Coast.  
 The **Red Hot Poker** forms large clumps of strap-shaped leaves with stunning poker-shaped flower heads of bright-orange, and become yellow as they open.  
 The **Natal Wild Banana** is palm-like and tall with large banana-like leaves and striated flowers.  
 The **Aloe Thraskil** (Dune aloe) is a tall, fast-growing, un-branched Aloe, that has a wonderful large rosette of orange-yellow flowers.  
 The **Strelitzia** is often named the Crane Flower and is known for producing abundant nectar that lures insects and a wide variety of birds.  
 The wide-spreading, flat-topped **Flatcrown** is found in open forests along our coastline and on forest margins.



### FISH LIFE

The **Garrick** is identified by its sinuous lateral line running from head to tail. They prefer the wave zone and are often caught at backline.  
 The **Coachman** is often found close to the bottom of rocky reefs, which are scattered all over the Seaton coastline, from close in shore to deeper reefs further out.  
 The **Richard** (or sardine as it is commonly referred to) is the fish responsible for the famous annual "sardine run" in June/July.  
 The **Dorado** is a dolphinfish with the most brilliant colours and a smooth, rounded profile.  
 The **Black Marlin** - this enormous, highly migratory and pelagic species ranges across vast stretches of ocean and is the most common marlin in South African waters.  
 The **Shad** feeds over sandy sea-beds in clear waters along the edges of reefs. A great one to catch off rocky points, it is also attracted to artificial light at night.  
 The **Humpback Whale** has distinctive long pectoral fins and a knobby head.  
 Our warm waters make for the perfect habitat for the **Bottlenose Dolphins**. Their silhouette can be seen in the barrel of a wave as they surf up and down our coastline, catching waves.



All rights reserved. Plans are subject to change without prior notice.



An aerial photograph of a coastal residential development. The scene features rolling green hills in the foreground and middle ground, with several large, modern houses scattered across the landscape. A winding road is visible, cutting through the hills. In the background, a blue ocean stretches to the horizon, with white waves breaking on a sandy beach. The sky is a clear, light blue. A large, faint, circular watermark logo is visible on the left side of the image.

AWASH WITH  
**NATURAL BEAUTY**

An aerial photograph of a coastal town built on a lush green hillside. The houses are scattered across the terrain, with some larger, more prominent buildings. In the background, the Indian Ocean stretches to the horizon under a clear blue sky. The town appears to be a mix of modern and traditional architecture, nestled in a scenic location with direct access to the beach.

# OCEANSIDE LIVING AT ITS BEST

Take in the breathtaking, 180-degree views of the Indian Ocean, delight in walking directly to exclusive beach frontage of the treasured Christmas Bay and explore the rehabilitated, lush coast and forests as your back garden.

Seaton presents a unique way of living on a grand scale with exquisite beach residences and equestrian opportunities along the North Coast of KwaZulu-Natal, in the charming coastal town of Sheffield Beach.





  
SEATON

CONTACT US  
[SEATONESTATE.CO.ZA](http://SEATONESTATE.CO.ZA)

